

balio

diagnostics



AX - 200

Biochemistry Analyzer

AX - 200

Biochemistry Analyzer 200 tests per hour

- ⊕ Random access automated analyzer
- ⊕ Up to 200 tests per hour
- ⊕ Low water consumption
- ⊕ 30 refrigerated sample positions
- ⊕ 60 refrigerated reagent positions
- ⊕ 8 wavelengths
- ⊕ Liquid level detection
- ⊕ Collision protection
- ⊕ Semi-reflective mirrors photometer
- ⊕ 81 cuvettes automatically cleaned

Excellent optical system

The AX - 200 uses an excellent optical system giving high sensibility and a cost optimization : semi-reflective mirrors, which guarantee 100% of the transmitted light for all the wavelengths.

Easy to use

The AX - 200 offers maintenance free micro-pump for reagents and specimens sampling. Besides, sampling probes are automatically adjusted and setting positions is directly managed via the software. The analyzer has been developed in order to facilitate the laboratory daily work by easy hydraulic and mechanic accesses.

Modern and innovant

The AX - 200 is directly piloted via one external computer (Windows XP, 7 and 10) and offers one possibility of remote control. Besides and in order to optimize datas management, the analyzer offers one LIS bidirectional connection and a quick update with saving datas.

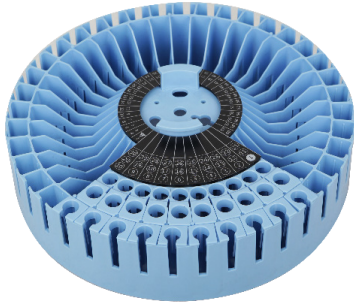
Economical

In order to optimize costs, the AX - 200 requires a small reaction volume, few consumables and low water and reagents consumption.



AX - 200

Multi-functional sample - reagent tray



- External barcode reader for reagents and samples in option.
- 30 samples positions et 60 reagents positions.
- Primary tubes, and sample cups can be used. Samples, controls, calibrators and STAT positions are programmables.
- 24 hours non-stop cooling with refrigerator.
- Ergonomic and user-friendly layout.

High performance agitator

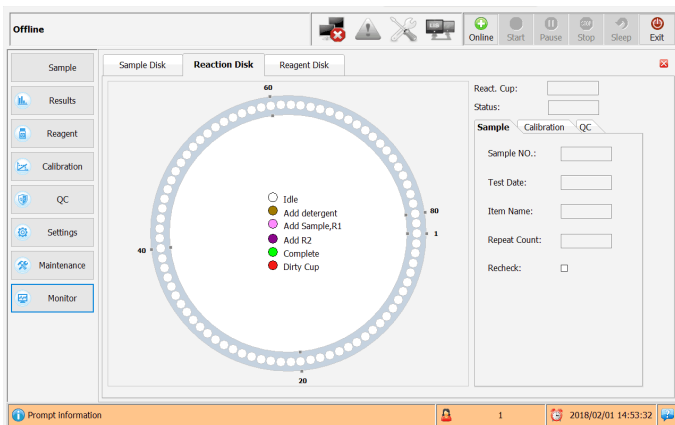
- Avoid cross contamination.
- Optimal homogenization in minimum time.

Recycable reaction cuvettes

- 81 recycable cuvettes to save operating costs
- 6-step auto washing and low carry-over.
- Automatic cuvettes blank checking to assure precise and reproducible results.
- Automatic level detection.

Modern and intuitive software

The AX - 200 offers a complete software with a quick start and 6 different menus facilitating the working confort of the laboratory.



- Reaction curves display.
- Automatic re-analysis.
- Reagents management.
- Levey Jennings QC management and Westgard rules.
- Real time functional check.
- Patients management.
- Linear and no linear calibrations.
- Historicals management.

AX - 200

TECHNICAL CHARACTERISTICS

THROUGHPUT.

Fully automated, discrete, random access, priority STAT sample,
Up to 200 tests per hour.

PRINCIPLES.

Absorbance photometry, turbidimetry.

METHODOLOGIES.

End-point, fixed-time, kinetic, single/dual chemical reagents,
monochromatic/bichromatic, linear/non linear multi-point calibration.

REAGENTS - SAMPLE TRAY.

60 positions for reagents and 30 positions for samples in refrigerated compartment (4 - 12 °C).

VOLUMES.

Reagent volume : 20 - 500 µL, step by 1 µL.
Sample volume : 2 - 100 µL, step by 0,1 µL.

PROBE.

Liquid level detection, collision protection, automatic blood clot detection.

REACTION SYSTEM.

Rotating tray, containing 81 cuvettes with an optical length of 5 mm,
Reaction volume : 150 - 500 µL,
Reaction temperature : 37 °C with a temperature fluctuation of +/- 1 °C.

MIXING SYSTEM.

Independent mixing bar.

LIGHT SOURCE.

Halogen-tungsten lamp.

PHOTOMETER.

Semi-reflective mirrors photometer.

WAVELENGTH.

340, 405, 450, 510, 546, 578, 630, 670 nm.

ABSORPTION & RESOLUTION.

Absorption range : 0 - 4.0 ABS,
Resolution : 0,0001 ABS.

CALIBRATION.

Linear (one-point, two-point and multi-point), Logit-Log 4P, Logit-Log 5P, Spline, Factor.

OPERATION UNIT.

Windows XP SP2 or SP3, 7 Home Basic, 10.

DIMENSIONS & WEIGHT.

788mm x 613mm x 573mm, 65 kg.

WORKING CONDITIONS.

Temperature : 15 - 30 °C,
Humidity : 35 - 80%.

WATER CONSUMPTION.

7 liters per hour.

ALIMENTATION.

200-240V / 50-60Hz / 600W or 100-120V / 60Hz / 600W.